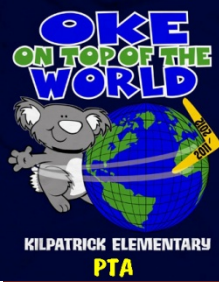


Event times, rooms and dates are subject to change. Please check website for any changes or call the front office.
www.okepta.org



| SUNDAY | MONDAY | TUESDAY | WEDNESDAY | THURSDAY | FRIDAY | SATURDAY |
|--------|---|---------|-----------------------------|---|---|----------|
| | | | 1 Eureka (5th) (OLA) | 2 | 3 Chili Cookoff | 4 |
| 5 | 6 | 7 | 8 Eureka (K) (OLA) | 9 School Store 10-2:30pm (OLA) | 10 Spring Party | 11 |
| 12 | 13 | 14 | 15 Eureka (1st) (OLA) | 16 Early Dismissal | 17 Student Holiday (Professional Learning Day) | 18 |
| 19 | 20 Student Holiday (Professional Learning Day) | 21 | 22 Eureka (1st) (OLA) | 23 | 24 | 25 |
| 26 | 27 | 28 | 29 Eureka (3rd) (OLA) | | | |



THE KOALA **SCOOP**
YOUR MONTHLY GUIDE TO YOUR OKE PTA NEWS, INFORMATION AND EVENTS.

FUNDRAISING OPPORTUNITY

The 2011-2012 Pull Tab collection continues.



We donate our tabs to our local Ronald McDonald House to be used in the direct operations of our local house. You can help by sending your pull-tabs back to school in a zip lock bag clearly **labeled with your child's grade level.**



Please help by saving Frito Lay chip bags. You can send them in with your child and a collection bin will be located in the cafeteria. Thank you to our custodians for making this project a success!

For more information about these programs, please go to www.okepta.org.

Bonzer Bash Donations Needed

Although the Bonzer Bash is not until the spring, we could use your help now! We will begin collecting the following items from now until time for the actual event.

- Hair Color Spray
- Individually Wrapped Candy
- Hot Wheels
- Bottled Water
- Nail Polish
- 2 Liter Soft Drinks
- Silly String

A collection box was placed inside the front doors of the school. Thank you for your help!



Frugal Fun Scoop
Family Build Your Own Pizza and Movie Night

Set out favorite toppings along with pizza sauce and pre made pizza crusts and let your family create their own pizza's! Pick a family favorite movie along with popcorn and everyone's favorite candy bar and drink! It's fun when everyone knows the dialogue!

If you have fun things you do with your family that don't cost a lot please send those ideas to the PTA Newsletter at okeptanewslet@yahoo.com

Quotable Quote for Parents!

Life isn't about finding yourself. Life is about creating yourself.
George Bernard Shaw

The Scoop on the PTA Board



OKE OTA Board members enjoy the Volunteer Breakfast!!

President Scoop

Many thanks to our school community and parents for their continued support in the Outback! As always your PTA board appreciates your feedback and your time volunteering and for making our programs and events successful for all students! Coming up this month are plenty of events that you won't want to miss! Just to name a few: Chili Cook-Off, monthly school store, Valentine's parties, Eureka sessions... and much more! So be sure to check out our PTA website at www.okepta.org for further details.

We appreciate your time, feedback and commitment for all that you do for our students at OKE. Feel free to contact me with any questions and concerns. See you in the Outback!

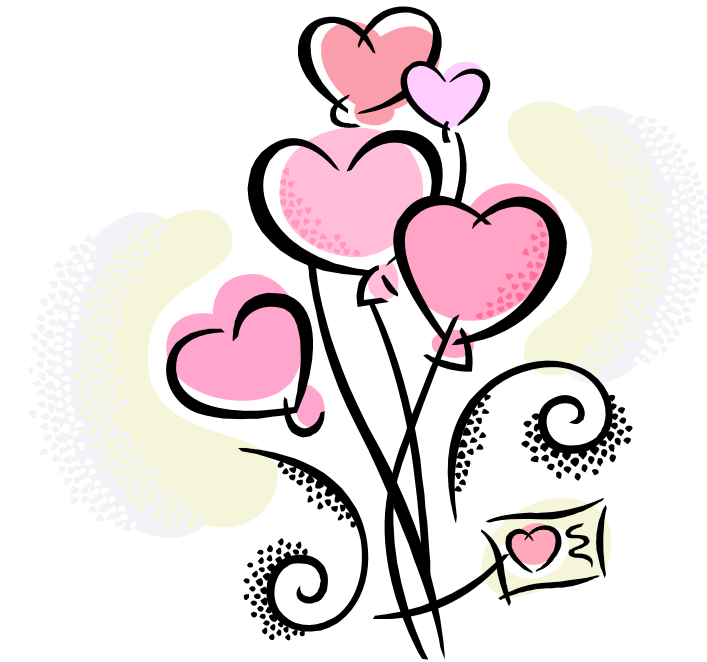
Cindy Cruz-Davis - OKE PTA President
cicdavis1@comcast.net www.okepta.org

MEMBERSHIP SCOOP

Membership cards and rewards have already gone home! Please be on the lookout. They are in a small brown envelope attached to the new Directory. We are distributing one directory per family. Any questions, please contact debbie_conaway@yahoo.com.

DON'T FORGET...

CHILI COOKOFF | Feb 3rd
OKE VIPS LUNCHEON | Mar 30th
BONZER BASH | Apr 14th



VOLUNTEER SCOOP



Kilpatrick Celebrates it's December Outbackers of the Month

“Outbacker of the Month” is the most prestigious award earned at Kilpatrick Elementary. Kilpatrick Outbackers exhibit “Koalaty” character continuously. Outbackers are those that always lend a helping hand, always have a smile on their face, serve as role models, and go above and beyond to make OKE the exemplary school that it is. One student, staff member, volunteer, and Partner in Education is chosen every month to be “Outbacker of the Month.”

*Pictured are: 1st Row: Emily Warwick, Addison Broussard, Srihitha Valluri, Luke DesJardins, Jenny Xun
2nd Row: Teacher Debbie Vickers, Camila Diaz, Rachel Oberman, Volunteer Patricia Gilarranz*

WHY VOLUNTEER???

DOUBLE YOUR GIFT TO YOUR OKE:
Give OKE your time, then give them your hours.
With that data, OUR CAMPUS can:

- Continually document the level of community engagement at your school
- Celebrate your volunteer program and elevate its importance on your campus
- Know where volunteers are working and spending the most time
- Define other volunteer opportunities to further engage parents and the community
- Raise awareness of the value of all campus organizations and all areas where parents support your school, (booster clubs, for example)
- Realize the value of off-campus and after-school volunteer support
- Use volunteer totals when applying for corporate and federal grants and campus awards
- To verify individual volunteer hours. Some companies ask for volunteer experience with job applications

These vounteer hours for all KISD schools are given to KISD administration at the end of the year to let them know how valuable our volunteers and their time are to us all.